

## GREEN PARK FESTIVAL ZONE

Prudential RideLondon is proud to host the **London Trials Championship presented by Buxton**. Top stunt rider Andrei Burton and his world class team of male and female champions take on the world championship standard course which includes a series of breathtaking replica iconic buildings as obstacles.

- **20" Modified Elite Trials:** 10:30-12:00
- **Women's Trials:** 12:30-13:00
- **26" MTB Elite Trials:** 13:30-15:00
- **Guinness World Record Attempts:** 15:30

**Trial Biking** - beginner's obstacle trails.  
**Go Ride racing** with coaches from British Cycling.  
**Bikeworks** - showcasing all-inclusive

cycling and adapted cycles on a unique cycling track.  
**Big screen** with all day entertainment.  
**Exchanging Places** - sit in the driver's seat of an HGV to get a better understanding of what the driver can and can't see.  
**Kids' Zone** - indoor cycle-themed arts and crafts including customising your tabard, outdoor kids games, bling your bike and entertainers.  
**Outdoor games** including giant Jenga, Connect Four, table football and lots more.  
**Activity areas** presented by Prudential, Skoda, Continental, Silverline, Cannondale and Amstel.  
**Cycle Food Court** with healthy food options.  
**Strider Learn to Ride Village** with baby rocking, toddler adventure zone, Special Educational Needs area and free lessons for children aged three to seven years.

## LINCOLN'S INN FIELDS FESTIVAL ZONE

**Picnic zone.**  
**Classical string quartet** on the bandstand.  
**Penny Farthing taster rides.**  
**Outdoor games.**  
**Cycle-themed face painting** for children.  
**Benugo Cafe.**

## GUILDHALL YARD FESTIVAL ZONE

**Voodoo Unicycles** - the world's only stunt unicycle team will amaze you with their stunts and tricks.  
**Bike polo** with pro matches and polo try-outs for spectators hosted by the London Hardcourt Bike Polo Association.  
**Pedal-powered Scalextrix.**  
**Inner Tube Challenge.**  
**Pedal-powered Watt Challenge.**  
**Pedal-powered juice bar** - pedal to produce your own tasty smoothie.  
**Pedal-powered sound** - Be the DJ and entertain with some pedal-powered sounds and beats.

## LEADENHALL MARKET FESTIVAL ZONE

**The Handlebards** - an energetic, charmingly chaotic and environmentally sustainable performance of Shakespeare on bicycles.  
**Big screen** with all-day entertainment.  
**Cycle Cinema** - pedal-powered screenings for cinema fans.  
**CLIF Bar** - take on the wrapper grab game, have a picture at the photo booth and enjoy some yummy samples.  
**Local Traders:** Offering a great mix of food and drink.

## SATURDAY 28 JULY

**09:00**  
 Prudential RideLondon FreeCycle route & Festival Zones open

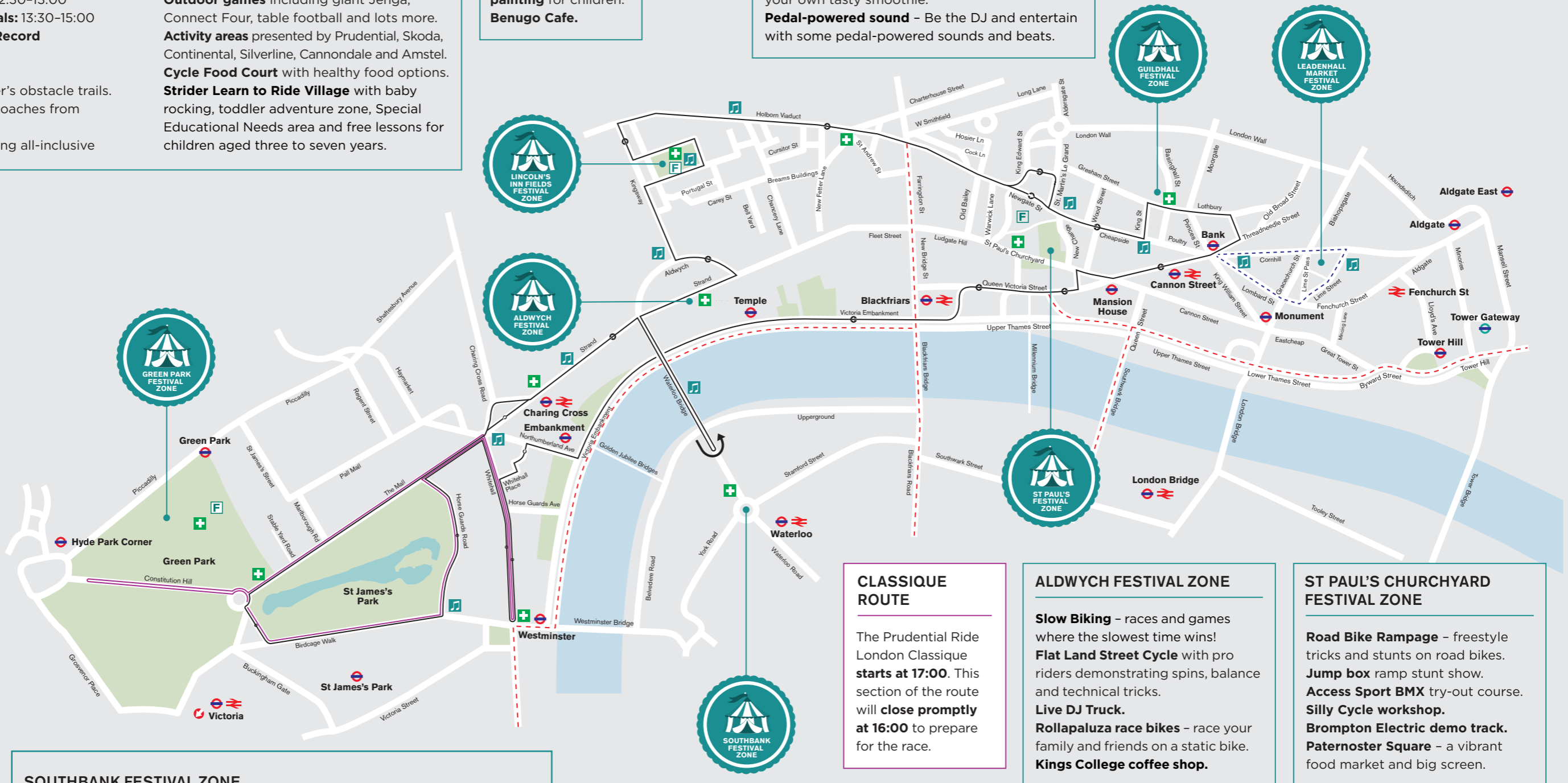
**14:00**  
 Busy period

**16:00**  
 Prudential RideLondon FreeCycle route & Festival Zones close. Stay in central London to watch the following races:

**17:00**  
 Prudential RideLondon Classique pro women's race

**19:15**  
 Brompton World Championship Final

**19:50**  
 Prudential RideLondon Handcycle Grand Prix



### SOUTHBANK FESTIVAL ZONE

**Freestyle Stunt Show** - an unbelievable showcase of skill, balance and style on wheels with shows throughout the day from 10:00-16:00. Make sure you stay for lessons and tips between each stunt show.  
**Puncture Kit** - don't miss the drumming cyclist.  
**Rollapaluzza races** - race your family and friends on a static race bike.

### CLASSIQUE ROUTE

The Prudential RideLondon Classique starts at 17:00. This section of the route will close promptly at 16:00 to prepare for the race.

### ALDWYCH FESTIVAL ZONE

**Slow Biking** - races and games where the slowest time wins!  
**Flat Land Street Cycle** with pro riders demonstrating spins, balance and technical tricks.  
**Live DJ Truck.**  
**Rollapaluzza race bikes** - race your family and friends on a static bike.  
**Kings College coffee shop.**

### ST PAUL'S CHURCHYARD FESTIVAL ZONE

**Road Bike Rampage** - freestyle tricks and stunts on road bikes.  
**Jump box** ramp stunt show.  
**Access Sport BMX** try-out course.  
**Silly Cycle workshop.**  
**Brompton Electric demo track.**  
**Paternoster Square** - a vibrant food market and big screen.

### KEY

- Prudential RideLondon FreeCycle route (8 miles)
- Prudential RideLondon FreeCycle Explore route
- First Aid points
- Band
- Food
- Cycle Superhighway
- Prudential RideLondon Classique route
- Riders can join at any point along the route*